

Product data sheet

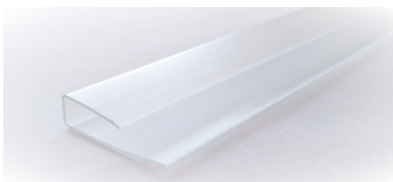
August 2024

POLYCARBONATE PROFILES

PC Profiles are an important component of the installation of Multiwall Polycarbonate sheets. The use of profiles directly affects the durability, strength, reliability and aesthetic appearance of a structure. Their main task is not only to connect and fasten the sheets, but also to protect the ends of the panels from deformation and ingress of moisture and debris, which will allow the finished product to maintain transparency and attractive appearance for years to come.

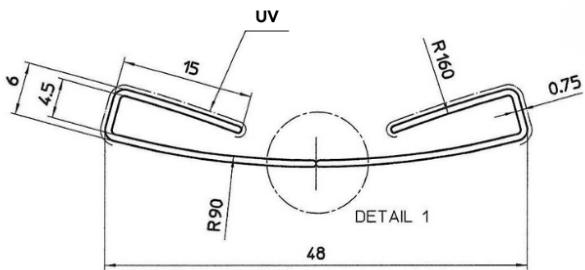
All Polycarbonate Profiles of SIA Ultrplast EU have a special UV-protective layer applied by co-extrusion and provide a long service life of the product.

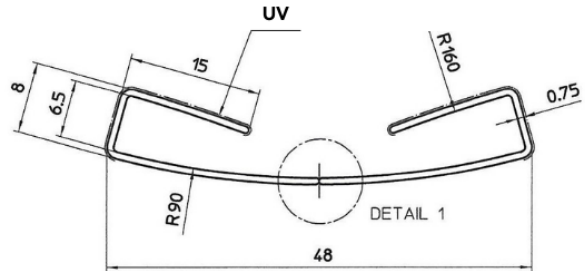
End profile UP



U-shaped polycarbonate profile is fixed to all edges of the sheet with open cells: canopies, canopies, greenhouses (doors, windows, perimeter of the base), fences, showers, advertising stands. Suitable for sheets with a thickness of 4 / 6 / 8 / 10 / 16 mm. Color: Transparent / Bronze.

Technical specifications:

Product name:	End profile UP 4mm	
Length	2100 mm	
Quantity in the package	20 pcs	
Weight of 1 pcs	84,00 g	

Product name:	End profile UP 6 mm	
Length	2100 mm	
Quantity in the package	20 pcs	
Weight of 1 pcs	87,15 g	

Product name:	End profile UP 8 mm	
Length	2100 mm	
Quantity in the package	10 pcs	
Weight of 1 pcs	122,00 g	

Product name:	End profile UP 10 mm	
Length	2100 mm	
Quantity in the package	10 pcs	
Weight of 1 pcs	126,00 g	

Product name:	End profile UP 16 mm	
Length	2100 mm	
Quantity in the package	10 pcs	
Weight of 1 pcs	141,75 g	

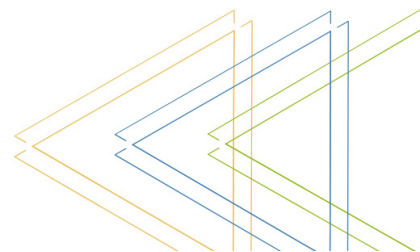
Connective unsplit profile HP



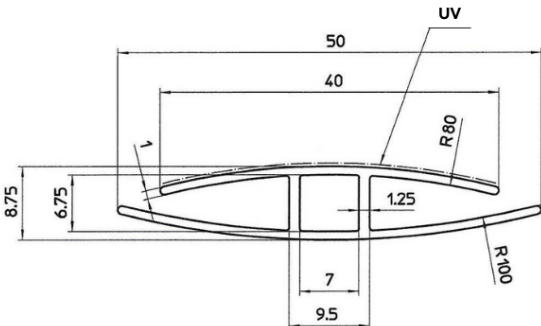
H-shaped polycarbonate profile is used to connect the end of the sheets: terrace roofs, greenhouses, office partitions, advertisement and light boxes.

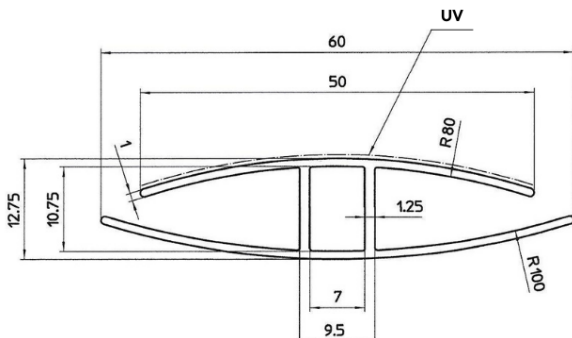
Suitable for sheets with a thickness of: 4 / 6 / 8 / 10 / 16 mm.

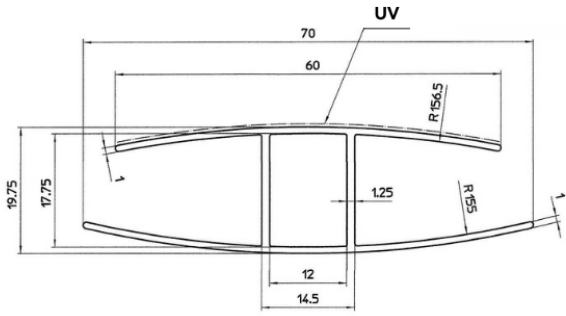
Color: Transparent / Bronze.



Technical specifications:

Product name:	Connective unsplit profile HP 4-6 mm	 <p>Technical drawing of the HP 4-6 mm profile. Dimensions include: total length 50 mm, inner length 40 mm, top width 8.75 mm, top width at ends 6.75 mm, bottom width 7 mm, bottom width at ends 9.5 mm, and radii R80 and R100. A central slot of 1.25 mm is shown. A 'UV' label points to the top edge, and a 'V' label points to the bottom edge.</p>
Length	6000 mm	
Quantity in the package	10 pcs	
Weight of 1 pcs	780,00 g	

Product name:	Connective unsplit profile HP 8-10 mm	 <p>Technical drawing of the HP 8-10 mm profile. Dimensions include: total length 60 mm, inner length 50 mm, top width 12.75 mm, top width at ends 10.75 mm, bottom width 7 mm, bottom width at ends 9.5 mm, and radii R80 and R100. A central slot of 1.25 mm is shown. A 'UV' label points to the top edge, and a 'V' label points to the bottom edge.</p>
Length	6000 mm	
Quantity in the package	10 pcs	
Weight of 1 pcs	1008,00 g	

Product name:	Connective unsplit profile HP 16 mm	 <p>Technical drawing of the HP 16 mm profile. Dimensions include: total length 70 mm, inner length 60 mm, top width 19.75 mm, top width at ends 17.75 mm, bottom width 12 mm, bottom width at ends 14.5 mm, and radii R156.5 and R155. A central slot of 1.25 mm is shown. A 'UV' label points to the top edge, and a 'V' label points to the bottom edge.</p>
Length	6000 mm	
Quantity in the package	5 pcs	
Weight of 1 pcs	1200,00 g	

